



34 Albany Road, Salisbury, Wiltshire, SP1 3YH

£515,000 Freehold

Description

Property Specifics

Entrance hall

Sitting room

Dining room

Kitchen/breakfast room

Stairs to first floor - landing

Bedroom one

En suite shower room

Bedroom two

Bedroom three

Bathroom

Outside

Agents note

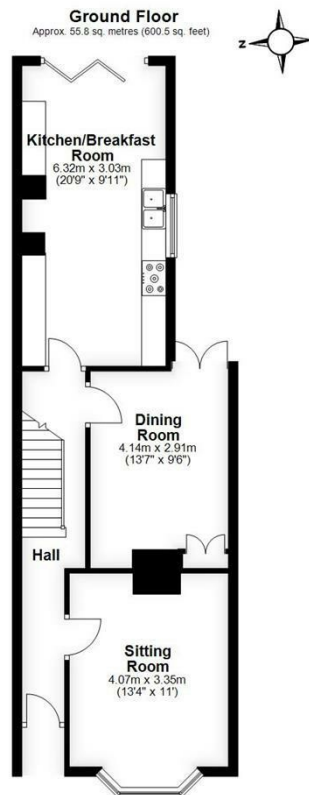
Services

Outgoings

Directions

WHAT3WORDS

What3Words reference is: [///dock.organs.driven](#)



Total area: approx. 106.7 sq. metres (1148.2 sq. feet)



Energy Efficiency Rating		
Very energy efficient - lower running costs	Current	Potential
A (91-100)		86
B (81-90)		
C (69-80)		71
D (55-68)		
E (49-54)		
F (45-48)		
G (41-44)		
Not energy efficient - higher running costs		
England & Wales		EU Directive 2002/91/EC

WHITES
Castle Chambers, 47
Castle Street, Salisbury,
Wiltshire, SP1 3SP
01722 336422
www.hwwhite.co.uk
residential-
sales@hwwhite.co.uk

